

Providence  
Schools

**BUILT TO LEARN  
BUILT TO LAST**

PPSD Capital Plan  
Updates

Fall 2024



# Agenda & Introductions

- Providence Schools Capital Plan Overview
- Future Messer/West Broadway School Planning





# The Challenge & Opportunity



Our school buildings suffer from **decades of underinvestment** and ineffective band-aid fixes. With new funding opportunities and a strategic capital plan aligned with instructional programs, **transformational change** is happening.

Our goal: **We will have enough seats for all PPSD students to be in new or like-new facilities by 2030.**

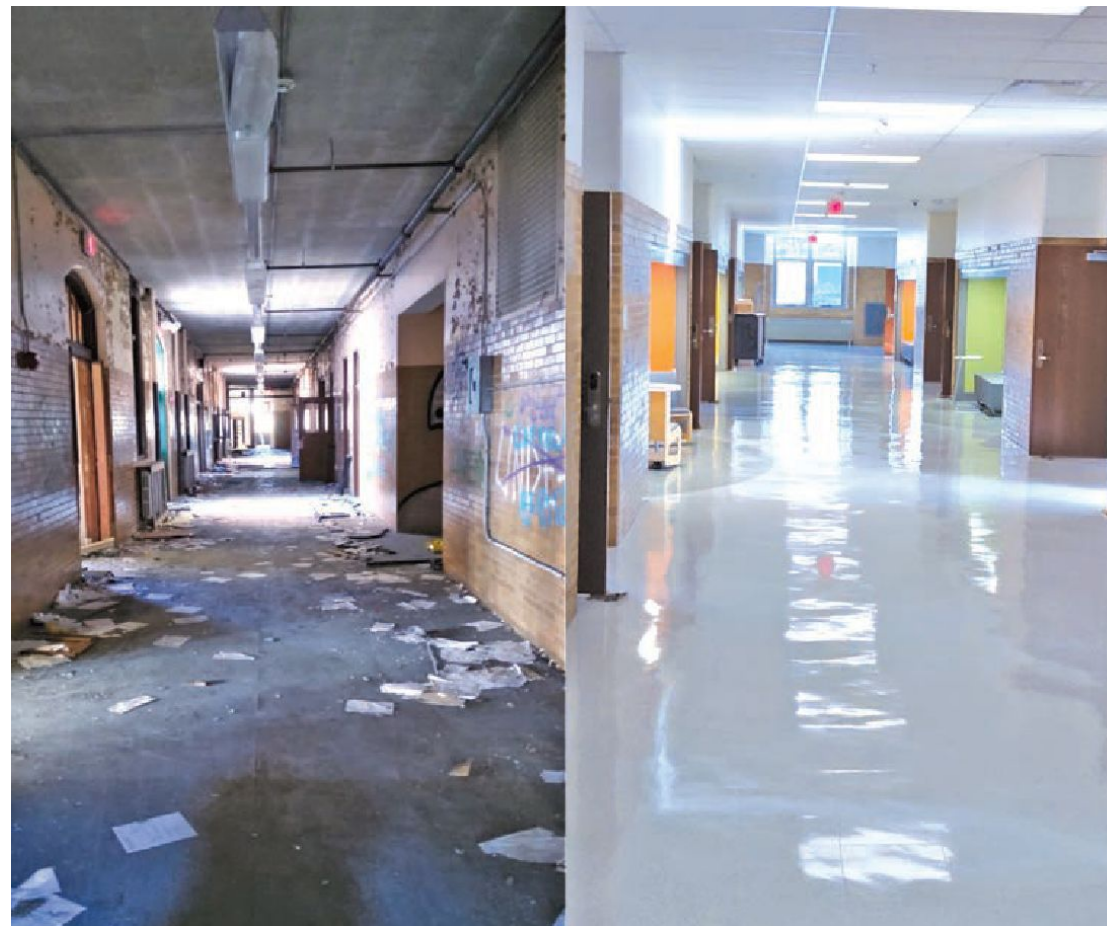
The next round of bond funding before the voters in November is a once-in-a-lifetime opportunity to get our students the buildings they deserve.



# Capital Plan Priorities

We have a once-in-a-lifetime opportunity to raise expectations for what our students deserve.

- Big, **transformational projects** for entire schools
- **Reimagining the middle grades** experience with the Pre-K through 8 model and **expanded pre-kindergarten**
- **Newer and fewer** - right-size the number of buildings for Providence's current and projected enrollment
- Build **where families live**, and ensure all communities benefit from school construction



The abandoned Windmill Ave. school

Fully renovated Narducci Learning Center, reopened Fall 2023



# Capital Plan Phases I – III

Exciting work is happening all across the city

## Major projects completing construction

- New Pleasant View Elementary School open this year
- Classical High School renovations completing later this year
- Major work at Hope (dance studio) and JSEC (biomed lab) to support school's program redesign

## New construction

- Harry Kizirian Elementary will reopen as Pre K through Grade 8 school in 2027
- Mary Fogarty Elementary will reopen as Pre K through Grade 8 school in 2027

## In design

- Mount Pleasant Early College and Career High School
- Lima/Stuart Pre K-8 new building
- Asa Messer/West Broadway Pre K-8 new building



Dance studio construction at Hope High School



Two PPSD schools win US DOE Green Ribbon School award!

# Capital Plan Phase 4: Projects Planned and Approved

Approved by City Council and School Building Authority, going before voters in November.

## New Build or Like-New Renovation

Roger Williams PK-8

Robert F Kennedy PK-8

Martin Luther King K-5 and Early  
Childhood Center

Nathaniel Greene PK-8

Hope High School

Vartan Gregorian K-5

Carnevale/DelSesto PK-8

## Restore to New

Central High School

E-Cubed High School

Alvarez High School

Nathan Bishop 6-8

Bailey K-5

Young & Woods K-5

JSEC High School

Leviton Dual Language K-5

PCTA High



# Agenda

- Providence Schools Capital Plan Overview
- Future Messer/West Broadway School Planning



# Messer & West Broadway School: Future Planning

- Approved by City Council and School Building Authority for a **\$62.5M investment**
- **New build** on site current Messer, adding Grades 6 – 8, keeping enrollment the same as current Messer & West Broadway with 4 classes per grade level
- Design **driven by program needs** to support teaching model

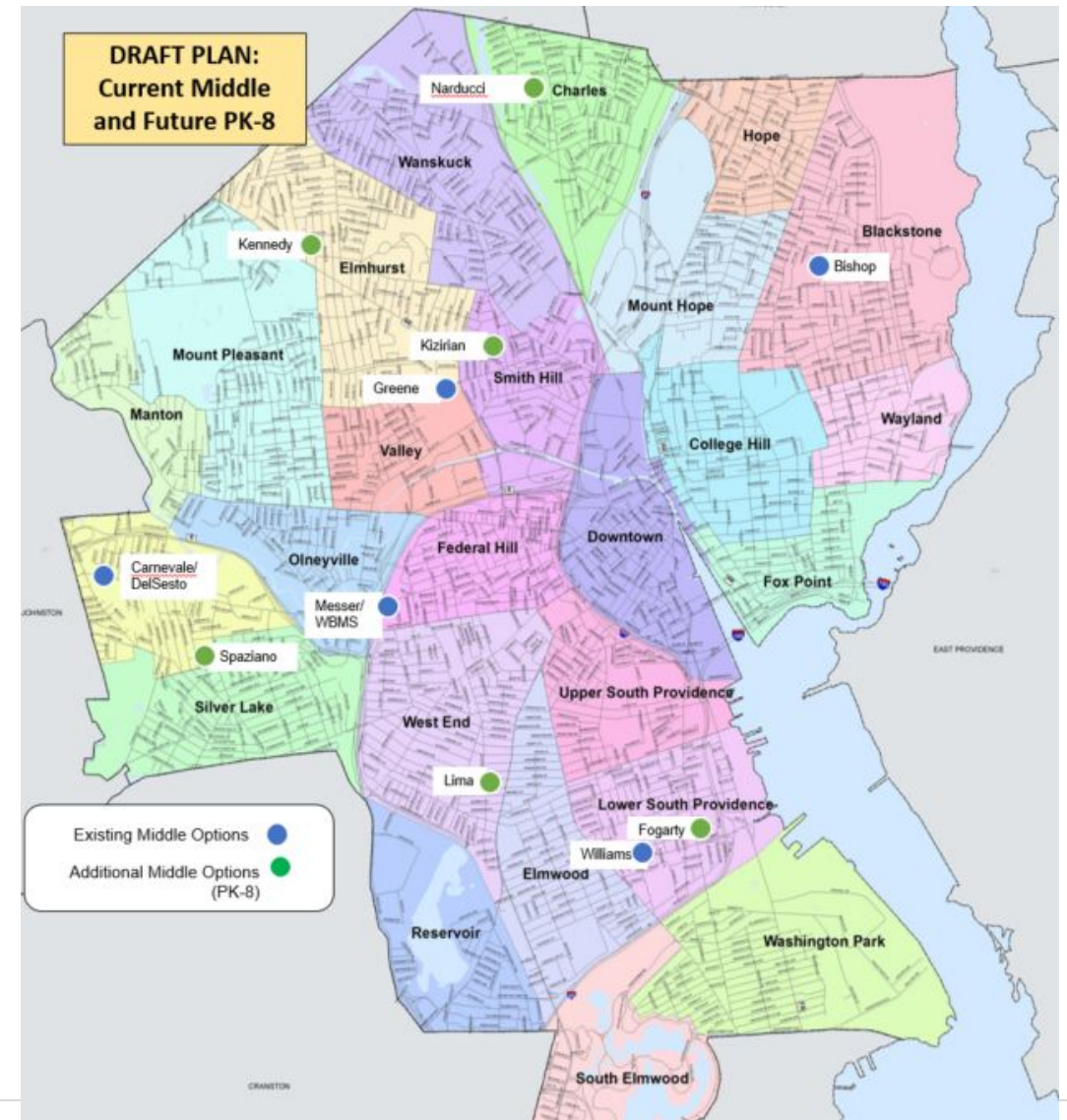


# Spotlight: Pre-K through 8 Schools

A shift toward a longer-term school communities, closer to home.

Research shows that the PK-8 model supports a **stronger school community**, allowing more **robust relationships** between staff, students, and families.

- **Decrease middle school size** from 300 to 100 students per grade
- Expand middle school options from 6 to 11 schools, bringing **middle school closer to home**
- Increase number of years in elementary community from six to ten – students will build **relationships from 4 to 14 years old**
- Keep **siblings together** for longer
- Responds to **community demand for change**



# Reimagine the middle school experience

Thoughtfully designed school buildings to support students and community

## Examples of Programmatic & Building Supports

- **Separate areas** for each age level:
  - Bathrooms
  - Play spaces
  - Entrances
  - Common areas/lockers
- Shared spaces to **maximize resources** and **build community**:
  - Auditorium
  - Gym
  - STEM, art, and music rooms





# What we've heard from you

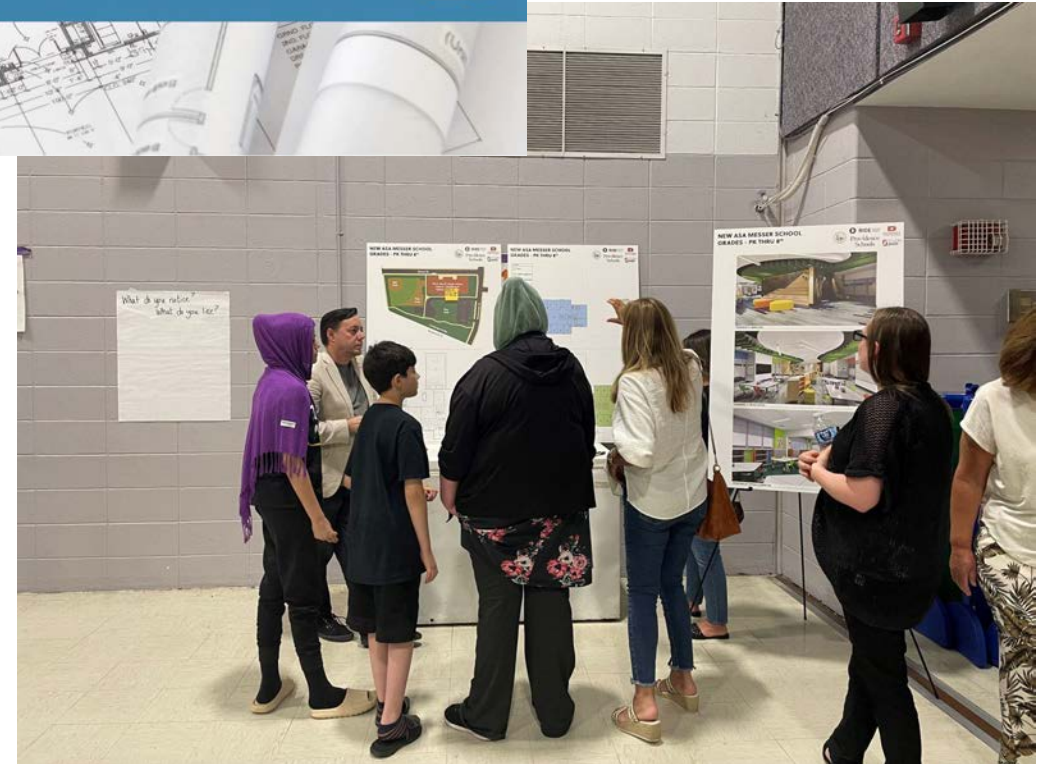
Engagement with school staff, faculty, and families over the past two years

## What are you most excited about when it comes to PK-8 Schools?

- “The ability for my kids to stay with their siblings and administrators they’ve become familiar with.”
- “En mi caso tengo dos niños, así permanecería juntos más tiempo.”
- “Feeling like my family can invest in ourselves - time, energy, money, etc. - in a long-term community.”

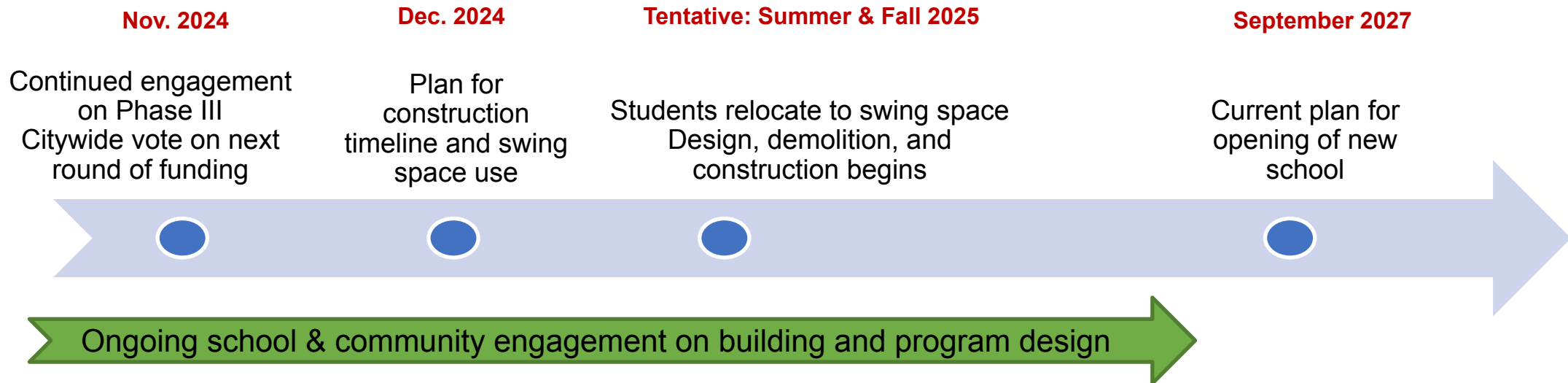
## Messer & West Broadway: What we should keep in mind (from spring 2024):

- **Accessibility:** “an elevator will be a great addition”
- **Inclusivity:** “the plan includes a way to not separate special education classes from the teams”
- **Community:** “most students have known each other since elementary school” “small community is like a family and we have established strong relationships with students and families”
- **Safety:** separate play spaces, bathrooms, and common areas for oldest and youngest students



# Messer & West Broadway School: Timeline & Design Decisions

- Construction to occur on site of Messer, estimated to take 2 school years, while Messer students relocate
- Once construction complete, students would relocate from swing space site and WBMS to new Messer/WB



- District and school academic team to work with school community on program design
- Design firm to work with school community and district on project scope and building design

# Messer & West Broadway School: Quick Poll

Join at [menti.com](https://menti.com) | use code 2376 5182

 Mentimeter

## Instructions

Go to

[www.menti.com](https://www.menti.com)

Enter the code

2376 5182



Or use QR code



# Feedback & Questions

